

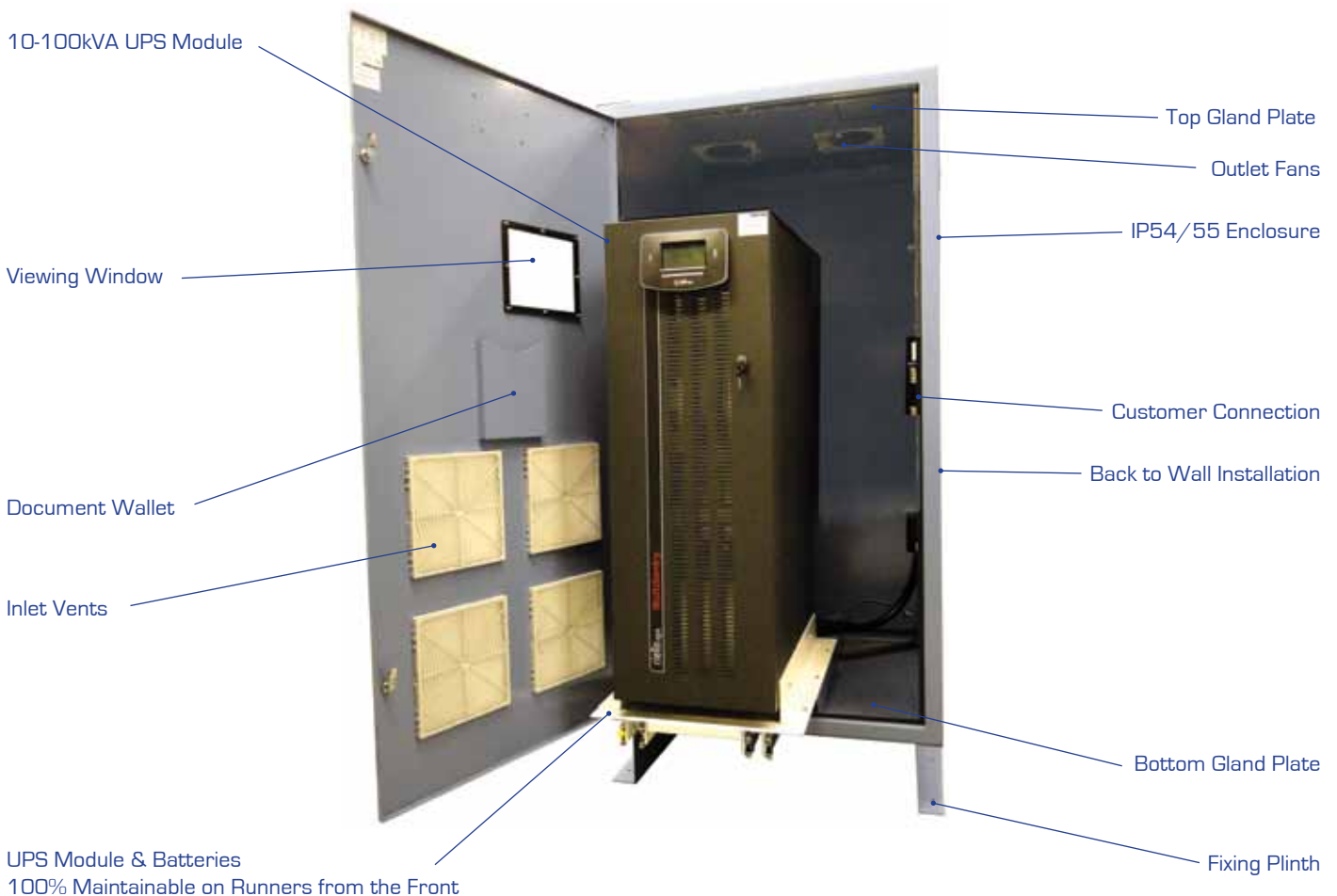


Harland ProtectUPS® - Industrial Water Industry WIMES 3.07 UPS

HPU-I-XXXX-1000 W

Harland Simon UPS Ltd. has designed the Harland ProtectUPS® - a range of fully protected and integrated IP54/IP55 WIMES 3.07 compliant UPS systems.

The Harland ProtectUPS® ranges from 10kVA and up to 100kVA to support critical equipment on water and sewage treatment sites in the event of mains failure.



- » WIMES 3.07 compliant
- » IP54 or IP55
- » 10kVA - 100kVA
- » Single or three phase
- » Battery runtime to suit
- » Protected against harsh environment
- » Long life
- » Easy maintenance





Harland ProtectUPS®- Industrial Water Industry WIMES 3.07 UPS

The Range



REFERENCE SITES



The WIMES 3.07 range of Harland ProtectUPS® is configured to customer specifications. Please sp



Harland ProtectUPS®- Industrial Water Industry WIMES 3.07 UPS

The Range

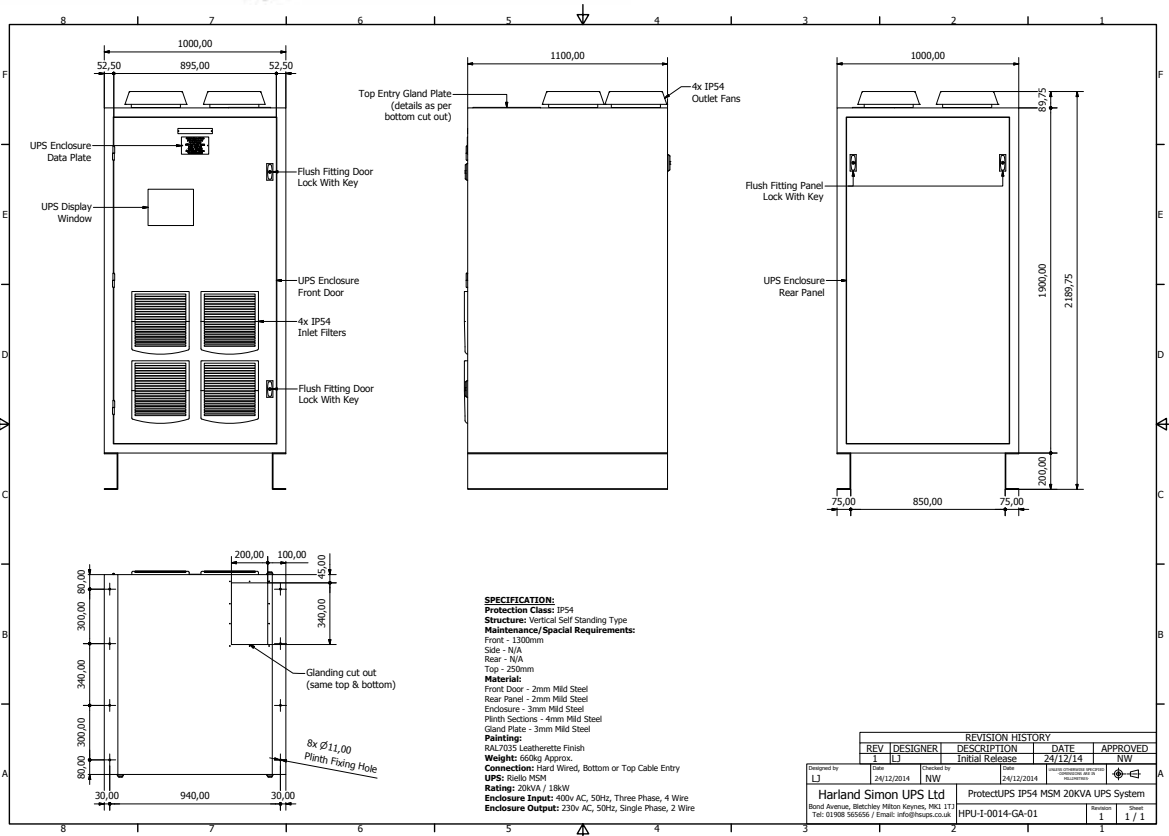


OPTIONAL FEATURES

WIMES 3.07 Compliant
IP54 Indoor/IP55 Outdoor
Easy Maintenance
Long Life Battery
Wide Capacity Range
Variety of Communication Options

APPLICATIONS

SCADA/PLC
ICA/MCC
Pumps/Actuators/Motors
UV Systems
Security



Speak to us if you require any variation to the stated example specifications to any of the above models.



Harland ProtectUPS®- Industrial Water Industry WIMES 3.07 UPS

Technical Specification

MODEL	HPU-I-XXXX-1000 W
Harland Reference	Harland ProtectUPS® - 1000W cabinet
Part Number	HPU-I-XXXX (unique part number for each specific version)
Model	True on-line double conversion UPS with internal static & manual bypass, also available as convertor
Type	IP54 Protected UPS system IP55 Upgrade for outside installation
Temperature Range	0°C to +40°C
Rating	10kVA up to 100kVA Selectable 10/15/20/30/40/60/80/100kVA
Autonomy	Dependant on load - normally 5 to 30 minutes (up to 40kVA internal) Longer runtimes via external battery cabinet
Input Supply	230VAC single phase (10kVA to 20kVA) 400VAC three phase (10kVA to 100kVA)
Output Supply	230VAC single phase (10kVA to 30kVA) 400VAC three phase (10kVA to 100kVA)
Input Protection	None. Customer to supply external supply MCB (optional input MCB)
Output Protection	None. Customer to supply external load MCB or distribution board (optional output MCB)
Battery Type	Internal battery: 5 or 10 year life VRLA or 10+ year life Lead Crystal®
Battery Capacity	Multiple strings of internal 7/9AH
Recharge Time	Normally 90% within 24 hours
Charger Rating	Normally 10% of battery AH
Cooling	Higher reliability fans, redundancy and fan fail alarm options
Controls	Internal UPS module controls
Display	Internal mimic display with status, meters, alarms, etc.
Alarms	Internal = mimic display alarms External = optional relays, RS232, SNMP, Modbus, etc.
Enclosure	Welded painted sheet steel enclosure with basemounted cable gland plate, air inlet at front, back to wall installation and air outlet at top
Maintenance	UPS module is fitted on runners which slides forward for easy maintenance
Paint Finish	RAL7035 light grey (other colours on request)
Standards	CE marked compliant with WIMES 3.07
Dimensions	2100mm H x 1000mm W x 1100mm D
Weight	From 400kg up to 1000kg
Warranty	12 months (upgradeable to 36 months or longer)
Cable Entry	Undrilled bottom entry gland plate (top as option)
Options	*Internal or external manual bypass switch *Internal input & output MCB *Dual redundant cooling and fan fail alarm *IP55 outdoor protection *Relay alarm card *SNMP/Ethernet interface *MODBUS/JBUS BMS interface *Input or output isolation transformers or 110VAC output *External long runtime battery packs, heater and thermostat

Harland Simon UPS Ltd • Bond Avenue • Bletchley • Milton Keynes • MK1 1TJ
T: 01908 56 56 56 • E: enquiries@hsups.co.uk • W: harlandsimonups.com

