



## Manual Bypass Switches 20A - 160A

**H**arland Simon supplies a range of rugged wall mounted external Manual Maintenance Bypass switches.

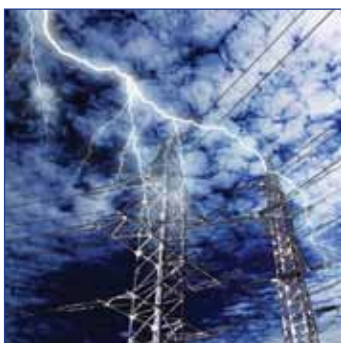
The key benefit of fitting a Maintenance Bypass switch to any UPS installation is that the UPS can be serviced or completely removed without disruption to the critical load avoiding costly down time.

Manual bypass switches can be retrofitted to an existing UPS installation or supplied as part of the initial UPS purchase.

Bypass switches are generally three position switches labelled Normal/Test/Bypass.

Alternative combination and designs are available which may include power distribution and outgoing circuit breakers.

Rating	Part Number	Enclosure Type	Dims (mm) (w x d x h)	Connection	Weight (kg)
<b>Rotary Single Phase (2 Pole)</b>					
20A	006-SP/20/P/S/AUX	Polycarbonate	105 x 85 x 170	To Switch	0.6
20A	006-SP/20/S/T/AUX	Steel	200 x 120 x 300	To Terminals	5
32A	006-SP/32/P/S/AUX	Polycarbonate	200 x 200 x 160	To Switch	1.25
32A	006-SP/32/S/T/AUX	Steel	300 x 155 x 300	To Terminals	6
63A	006-SP/63/S/T/AUX	Steel	300 x 180 x 400	To Terminals	8
100A	006-SP/100/S/T/AUX	Steel	400 x 200 x 500	To Terminals	15
160A	006-SP/160/S/T/AUX	Steel	400 x 250 x 600	To Terminals	20
<b>Rotary Three Phase (4 Pole)</b>					
20A	006-TP/20/S/T/AUX	Steel	200 x 155 x 300	To Terminals	7
32A	006-TP/32/S/T/AUX	Steel	300 x 180 x 400	To Terminals	12
63A	006-TP/63/S/T/AUX	Steel	400 x 200 x 500	To Terminals	18
100A	006-TP/100/S/T/AUX	Steel	600 x 300 x 600	To Terminals	28
160A	006-TP/160/S/T/AUX	Steel	600 x 400 x 600	To Terminals	34



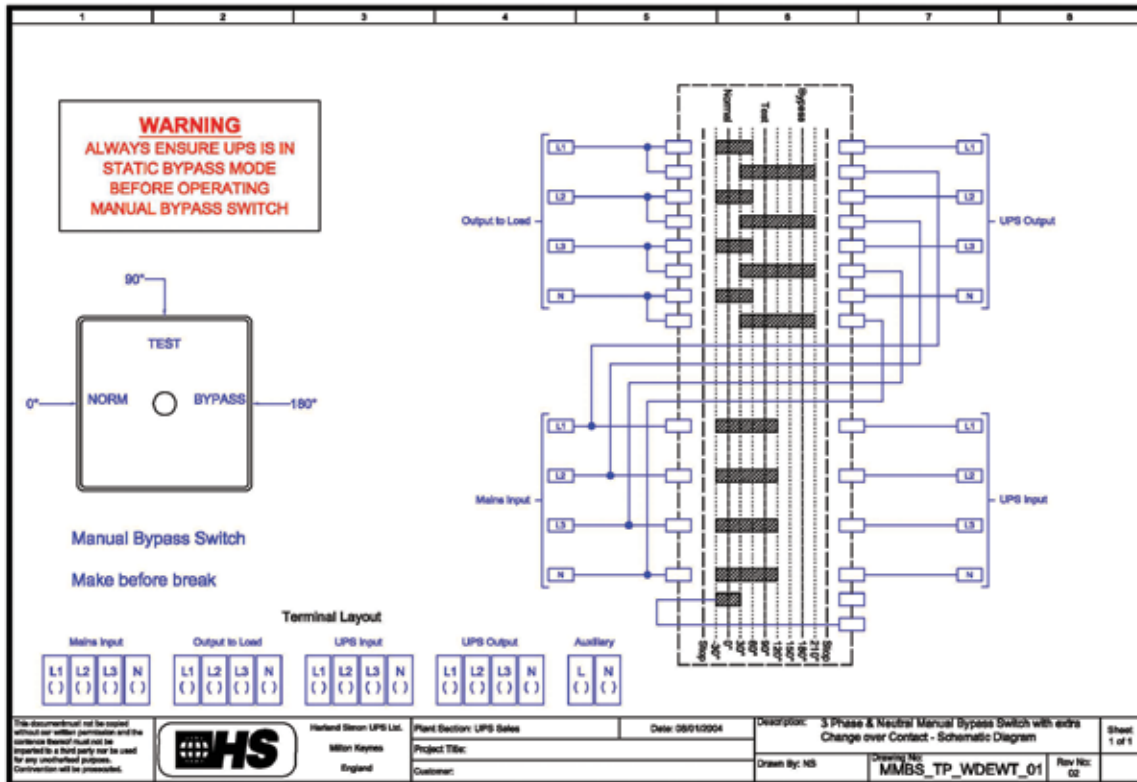
- » 3 Position Make-before-Break
- » Normal-Test-Bypass
- » Single or Three Phase Switches
- » Key or Pad Lockable (in all 3 positions)
- » Sheet Steel or Plastic Enclosures
- » Fitted with Aux to indicate in bypass (remotely)
- » Rated to IP65
- » Bottom Gland Plate (not plastic version)



# Manual Bypass Switches

## 20A - 160A

### Wiring Diagram



Larger Ratings



Commando Plug Sockets

Harland Simon UPS Ltd • Bond Avenue • Bletchley • Milton Keynes • MK1 1TJ  
T: 01908 56 56 56 • E: enquiries@hsups.co.uk • W: harlandsimonups.com

