



Battery Solutions

Lead Crystal® Batteries

Extended Runtime Battery Packs

Harland Simon UPS designs and manufactures a standard range of VRLA, NiCd or Lead Crystal® Extended Runtime Battery Packs that allows battery backup time to be increased to over 24 hours.

Extended runtime battery packs can be sold at point of sale or retrofitted to existing uninterruptible power supplies. Harland Simon's standard battery pack systems can be supplied as free-standing, 19" enclosure, 19" tray and panel. Options include for either 5 year or 10 year batteries and fast recharge times.

Lead Crystal® Batteries

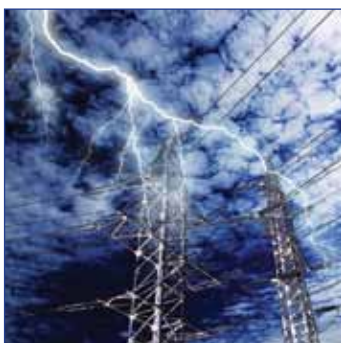
Lead Crystal® batteries can be used in any application where lead acid/gel batteries are used.

- Form | Fit | Function
- Very wide operating temperatures (-40°C to +65°C)
- Up to 99% recyclable
- Greener - ISO 14001 certified
- Safer - no toxic fluid, no hazardous emissions, no risk of explosion
- Significantly much greater cyclic life
- Discharge down to 0v - full recovery
- Higher capacity at lower temperature than VRLA
- 3 year warranty (longer on application at an additional cost)



Lead Crystal® batteries are designed for harsh environments.

Working in temperatures up to +65°C and down to -40°C they can be discharged down to 0 volts and recovered daily without the loss of capacity while retaining the ability to recharge twice as fast as traditional Lead acid variants.



- » Lead Crystal® batteries
- » Standalone cubicles
- » Complete 19" enclosures
- » 19" rack modules
- » Panel mounting modules
- » Extended runtime battery cubicles
- » Full project management service
- » Retrofittable



Battery Solutions

Lead Crystal® Batteries

Extended Runtime Battery Packs

Free Standing Systems

Fully assembled free standing enclosures on castors designed for easy delivery/installation and for Plug and Play operation with any UPS.

- Supplied with 2m AC & DC lead
- Range of standard enclosures, batteries and chargers
- 10 year high performance VRLA | LCB batteries
- 24AH to 100AH battery blocks
- Selectable recharge time - 12, 24 or 48 hours

19" Enclosure Systems

Complete 19" rack enclosure solution including: enclosure, UPS, bypass, distribution, charger and batteries.

- Complete 19" solution
- With or without UPS (customer can supply)
- 24U - 42U ventilated enclosure
- Glass or solid rear door option
- Modular Design: UPS module | bypass/connection module | static bypass module | DC connection/charger module | battery shelves
- 10 year high performance VRLA | LCB batteries
- Up to 190Ah top of front terminal batteries
- Standard room installation/ventilation
- Ingress Protection from standard IP31 up to IP54
- Dual redundant cooling fans



19" Tray Systems

Fully assembled 19" tray modules for installation into customer's own 19" enclosure and connection to customer's own UPS.

- Plug and Play operation
- 3U or 5U option (800D enclosure required)
- Multiple 7AH, 9AH or 24AH battery
- 10 year high performance VRLA | LCB batteries
- Selectable recharge time
- Packs can be paralleled for long runtimes and to give redundancy
- DC Bus to suit Customer's Requirement



Panel Systems

Harland Simon can supply UPS, charger, connections module, bypass and batteries complete with cabling for customer to install onto shelves to best meet their panel's space constraints.

- Modular design
- UPS module
- Manual bypass
- Charger/connection module
- 230VAC systems up to 6kVA and 110VAC systems up to 3kVA
- Battery runtime and recharge to suit
- Easy installation and connection
- 10 year high performance VRLA | LCB batteries



Harland Simon UPS Ltd • Bond Avenue • Bletchley • Milton Keynes • MK1 1TJ
 T: 01908 56 56 56 • E: enquiries@hsups.co.uk • W: harlandsimonups.com

